

## RAMBLA MAR BUILDING

The apartments are located in the Rambla del Poblenou, one of the most interesting residential areas of Barcelona, where shops are mixed, bars and restaurants with beautiful modernist buildings of great beauty. Its proximity to the beautiful beaches of Bogatell and Mar Bella makes them ideal for family life.

They are also in the area of influence of the 22 @ technological district of Barcelona, where a good number of multinational companies are located and where the city It is acquiring a new dimension.

### INTERIORS:

- Parquet flooring in the bedrooms and living areas
- Semi-lacquered interior carpentry
- Heating and air-conditioning with an air-air heat pump
- Pre-heated hot water with glass solar capture tubes and individual electric heat accumulators
- Aluminium frames with thermal break. Double glazing with air chamber.

### EXTERIORS:

- Facade with vitrified brick walls in white with stucco finishes.
- Balconies with laminated glass 5 + 5m, with sliding panels in all apartments

### SECURITY:

- Electronic doorkeeper
- Security entrance door to the homes with three fixing points.





## PARKING AND STOREROOMS:

- Indoor parking spaces
- Individual storerooms

## TELECOMMUNICATIONS:

- Telephone
- TDT
- Wifi

## KITCHENS:

- Fully equipped
- Built-in appliances: fridge, freezer, oven, vitroceramic hob, smoke extractor hood and dishwasher
- IMOLA Gres flooring, porcelain type
- Silestone countertops
- Combined washer-dryer with ventilation pipe

## BATHROOMS:

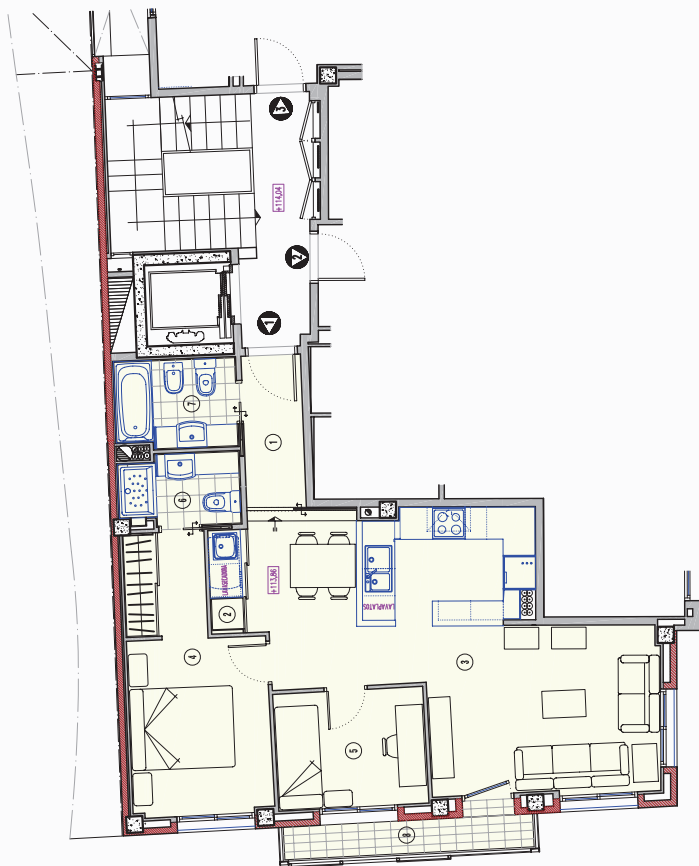
- IMOLA Gres flooring, porcelain type
- Ceramic countertops
- Vitrified porcelain sanitary ware
- Showers with glass shower screen
- Showers with glass shower screen



# 4º-1º

## 2 BEDROOMS/ 1 BATHROOM

EXAMPLE APARTMENT PICTURES AND PLANS.  
CONSULT OTHER LAYOUTS

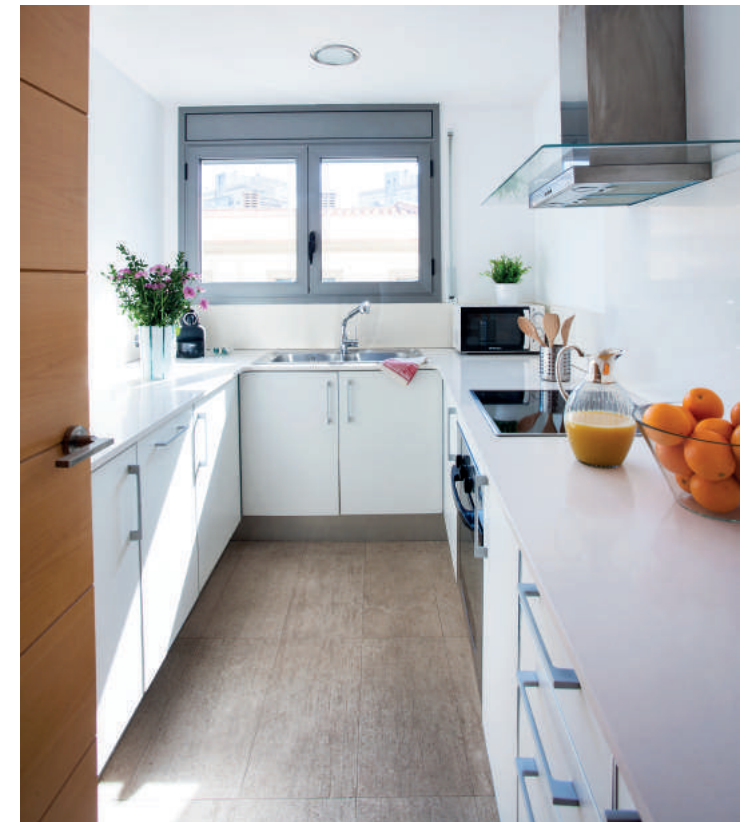
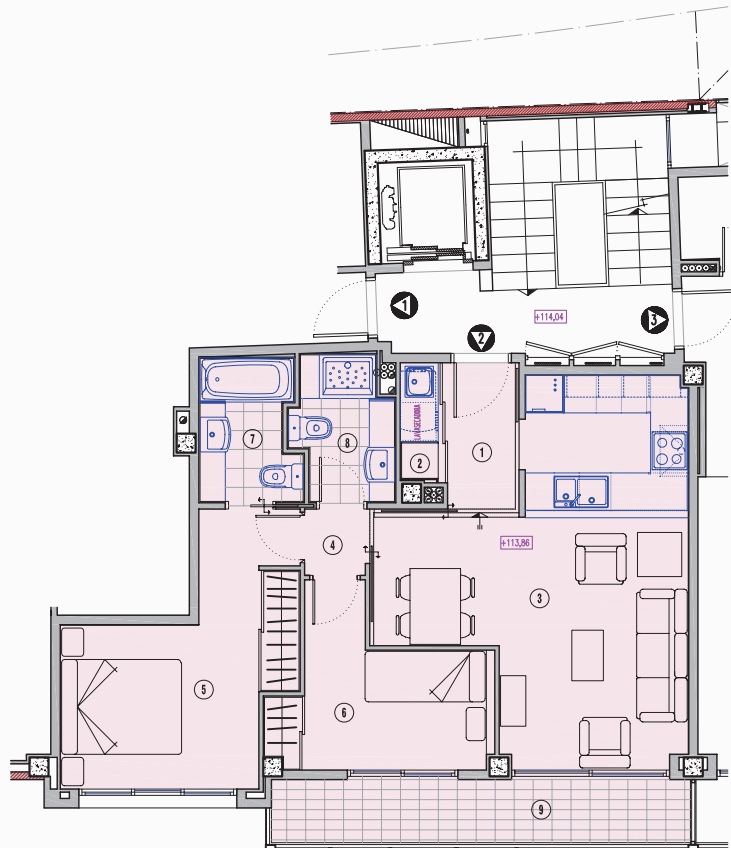




# 4<sup>o</sup>-2<sup>o</sup>

## 2 BEDROOMS/ 2 BATHROOMS

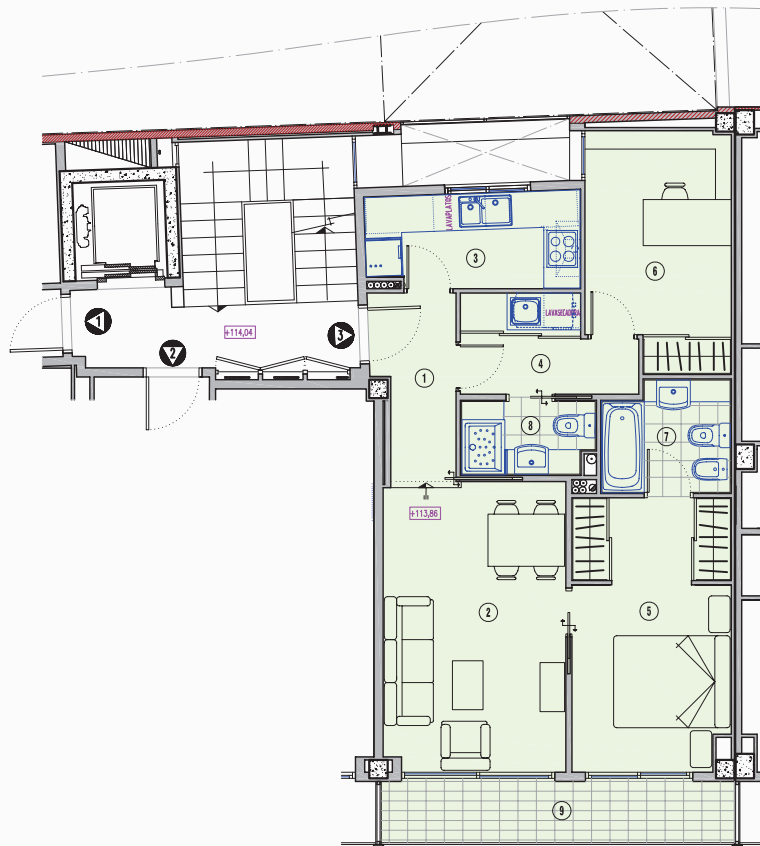
EXAMPLE APARTMENT PICTURES AND PLANS.  
CONSULT OTHER LAYOUTS



# 4<sup>o</sup>-3<sup>o</sup>

## 2 BEDROOMS/ 2 BATHROOMS

EXAMPLE APARTMENT PICTURES AND PLANS.  
CONSULT OTHER LAYOUTS





**RAMBLA DEL POBLENOU, 20, 08005  
BARCELONA**

By our telephone: +34 93 221 30 27  
or our e-mail: [info@durletapartments.com](mailto:info@durletapartments.com).

Carrer del Perelló 27A, 08005  
Barcelona

Opening hours: from 9h to 18h, Monday to Thursday  
from 9h to 14h, Friday

