

DURLET SUITES

YOUR HOME AWAY
FROM HOME



MEDIUM-TERM RENTAL (+ 32 DAYS)

DURLET SUITES BUILDING:

Newly constructed building located on Carrer de Vidal i de Valenciano, 9-15, in Barcelona's Poblenou neighbourhood, very close to the beach and Mar Bella park.

250 metres from the beach, the Base Nàutica and the Mar Bella Municipal Sports Centre.

In between the city's two main marinas: 1,300 metres from Port Olímpic and 1,800 metres from Port Fòrum.

Close to the historic centre of Poblenou and its market, and in the heart of Barcelona's technology district, 22@.

3 minutes from Rambla del Poblenou.

INDOORS:

- 1- 2- and 3-bedroom flats which are fully furnished, equipped and decorated.
- Exquisite, high-level luxury interior design.
- Apartments are divided by acoustic panelled ceilings for up to 50 decibels.
- Synthetic parquet flooring in the bedrooms and living rooms.
- Semi-lacquered interior woodwork.
- Air conditioning and DHW through an aerothermal system.
- Aluminium windows with thermal bridge. Double glazing with air chamber. Complete thermal and acoustic insulation.

OUTDOORS AND SWIMMING POOL:

- Furnished chill-out balconies.
- Magnificent swimming pool and roof terrace with chill-out area, solarium and shower.

SECURITY:

- 24-hour telephone service.
- Video intercom.
- Security entrance door to homes, with three fixing points and intelligent opening system.
- Alarm connected to the police 24 hours a day.
- Ground floor apartment windows with security bars.



PARKING AND STORAGE ROOMS:

- Indoor parking spaces for cars and motorbikes.
- Individual storage rooms.
- Bicycle parking.

TELECOMMUNICATIONS:

- DTT, Smart TV in all rooms.
- High-speed Wi-Fi.

KITCHENS:

- Open to the living room and fully equipped.
- Built-in appliances: fridge, freezer, oven, cooker, microwave oven, oven and induction hob, extractor hood and dishwasher.
- Synthetic parquet flooring.
- Integrated laundry washer/dryer with ventilation duct.

BATHROOMS:

- Synthetic parquet flooring.
- Ceramic cladding.
- Vitrified porcelain bathroom fixtures.
- Showers with glass partitions.

FURNITURE:

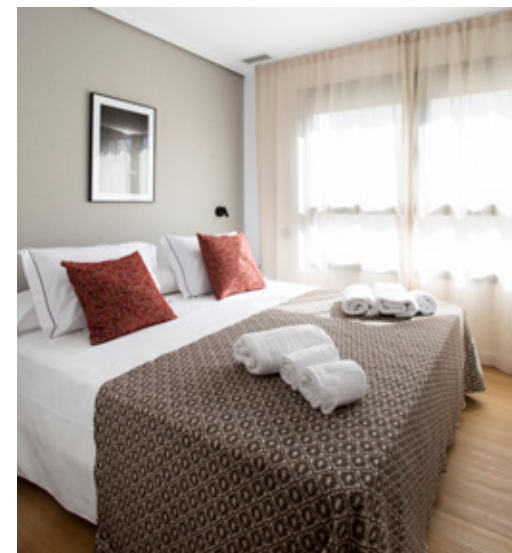
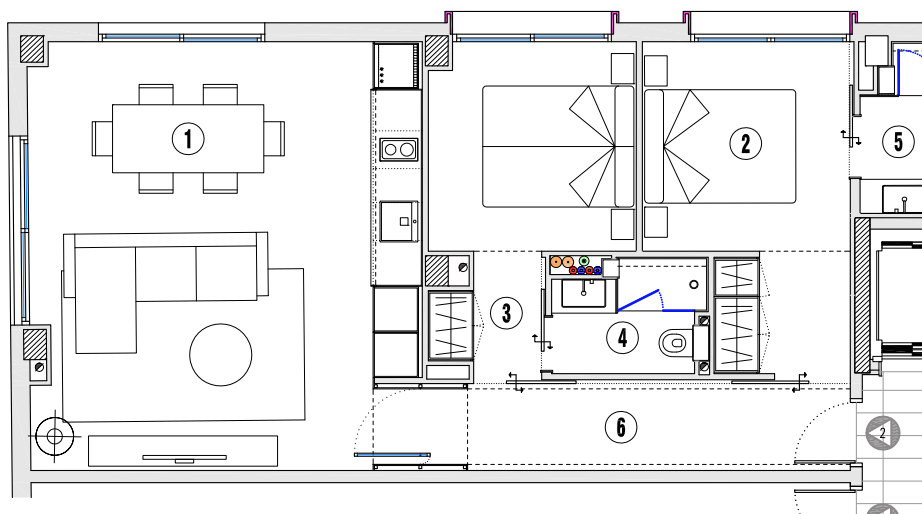
- High-quality, fully furnished and equipped apartments.
- Tailor-made, personalised furniture created for Durllet Suites.
- Signature interior design.



DURLET SUITES 2 BEDROOMS APARTMENT

2 BATHROOMS

TYPICAL FLOOR PLANS AND PHOTOS. ASK FOR OTHER LAYOUTS.



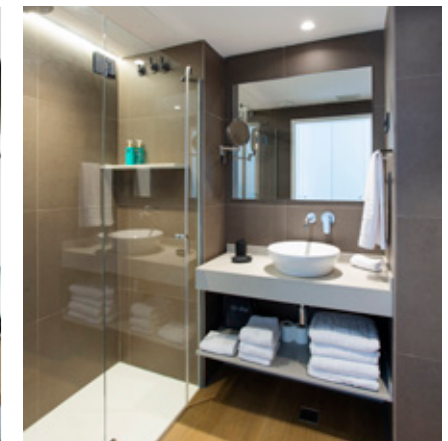
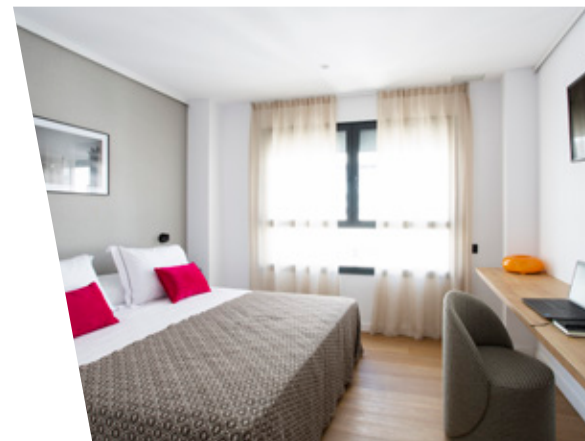
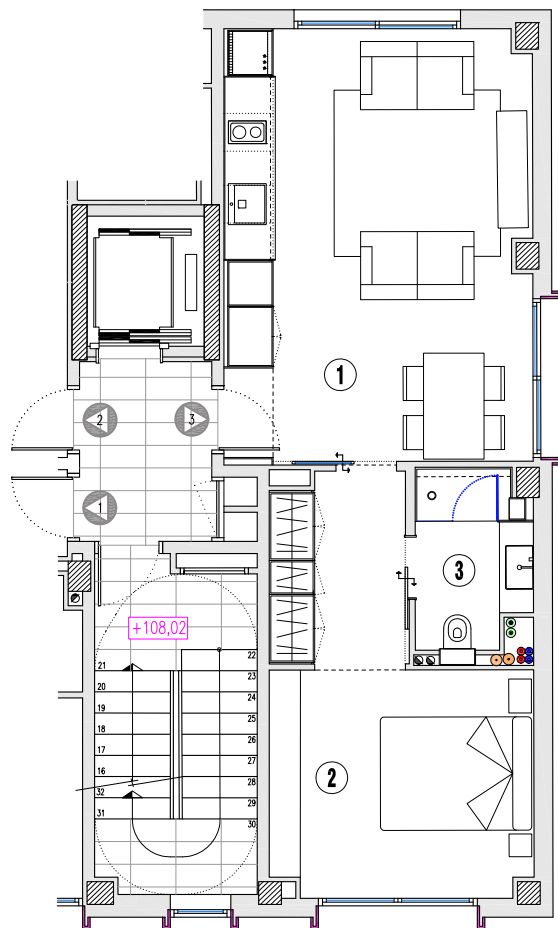
DURLET SUITES

1 BEDROOM

APARTMENT

1 BATHROOM

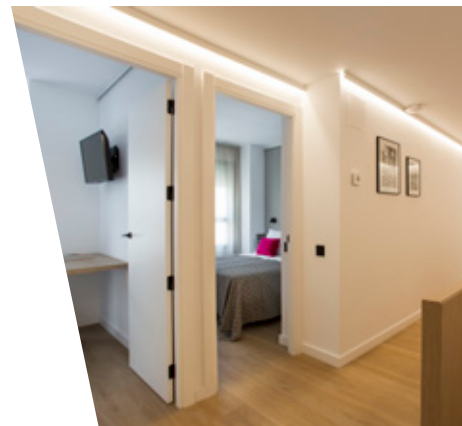
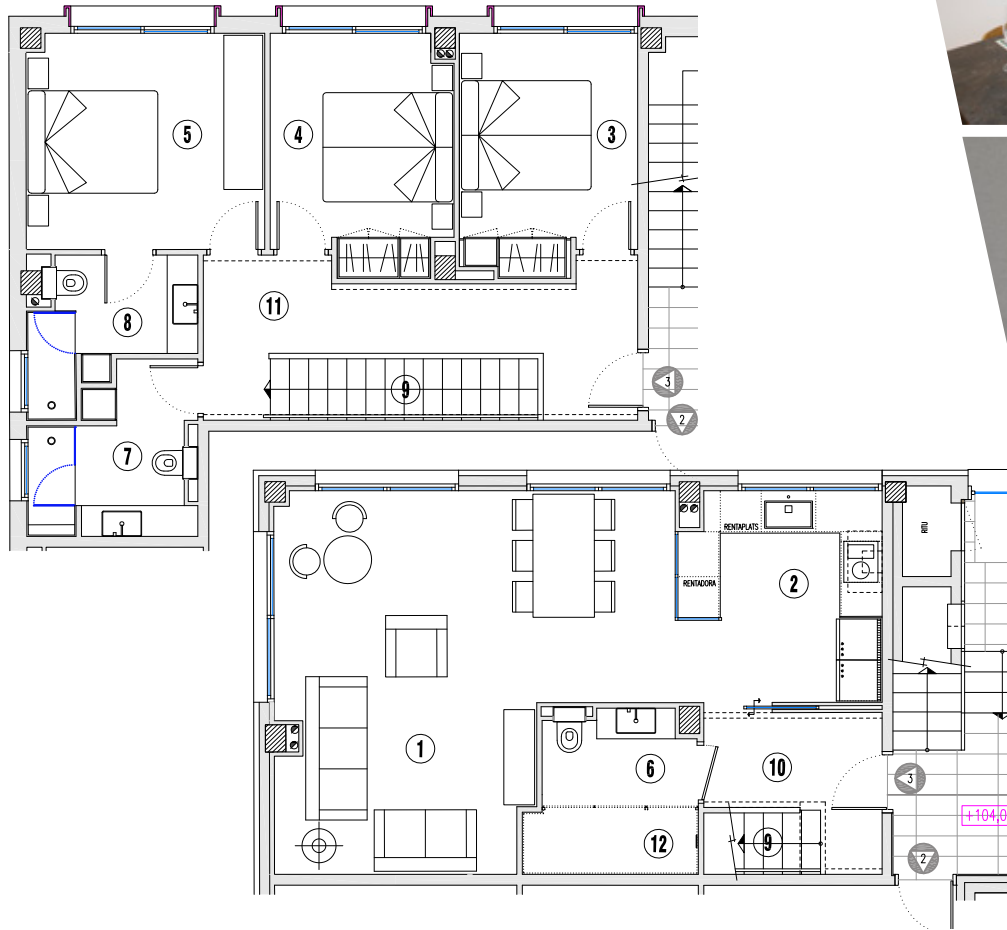
TYPICAL FLOOR PLANS AND PHOTOS. ASK FOR OTHER LAYOUTS.



DURLET SUITES DUPLEX 3

3 BEDROOMS / 2 BATHROOMS / 1 TOILET

FLOOR TYPICAL FLOOR PLANS AND PHOTOS. ASK FOR OTHER LAYOUTS



LOCATION

CARRER DE VIDAL I DE VALENCIANO 9-11 and 13-15

For more information about our mid-term flats, don't hesitate to get in touch with us:

Telephone: + 34 93 221 30 27

E-mail: bonaventura@durletapartments.com

If you prefer, you can come and see us at our offices:

Carrer del Perelló, 27A

08005 Barcelona

Opening times: Monday to Thursday 9am to 6pm

Friday 9am to 2pm

